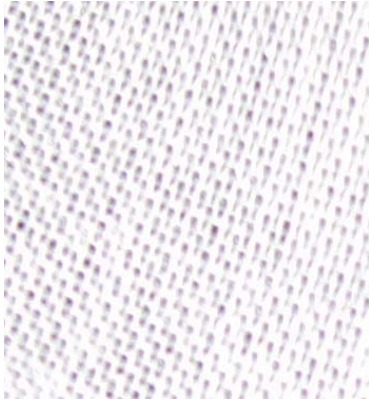


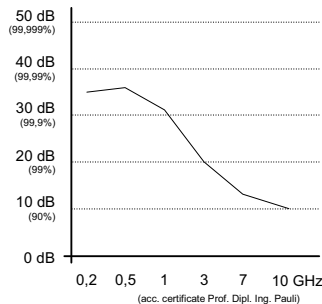
SWSH-E >> Radio Frequency / Microwave Shielding Fabric <<



Swiss Shield Evolution is a decorative, unbleached, sheer white synthetic fabric. It has excellent high frequency shielding characteristics. It is used, preferably, for curtains to shield windows, to cover part walls and for canopies. To ensure highest performance fell seams (overlapping), should be used. We offer custom made curtains for your specific needs.

- Used for shielding large surfaces (walls and windows) from high frequency electromagnetic waves (microwaves)
- **99 %– 99.9 %** effective in shielding RF, 200mhz to 3.3ghz
- Shields cell towers, cordless phones, security systems, wireless computer gear and more
- Smooth, sheer fabric, easy to work with, washable
- Sheer **synthetic fabric**
- Ideal for curtains to shield windows or bed canopies

Characteristics



WARNING: Swiss Shield Evolution reflects high frequency electromagnetic waves and is not externally conductive, therefore it must not and cannot be grounded.

Technical Data

Width/Length:	250 cm (98.4 inches) / by the meter or foot
Color:	Sheer, White
Characteristics:	Washable, colourfast, antistatic
Care:	Hand wash in cold water, hang to dry
Certificates:	MIL-STD 285, NSA 65-6, Öko-Tex Standard 100+1000,
Shielding characteristics:	35 – 20 dB (99.9%– 99.0%) at 200 MHz to 3.3 GHz

Sample